

Fact Sheet
Q3-2011



STRIVING TO BE THE SAFEST LOW COST PRODUCER IN THE CENTRAL APPALACHIAN COAL BASIN

AMERICAS ENERGY COMPANY (AENY) IS A CONSOLIDATOR OF HIGH QUALITY COAL PROPERTIES. AENY IS ACTIVELY ACQUIRING, DEVELOPING AND MINING BOTH SURFACE AND DEEP MINING PROJECTS IN SOUTHEAST KENTUCKY.

1. 7 PERMITTED MINES (3 SURFACE AND 4 DEEP)

AENY controls leases with Permits in excess of 6.5 million recoverable tons of High Quality Specialty Coal. We continue to add value to our lease portfolio through an aggressive exploration and acquisition program.

2. LOCATION & TRANSPORTATION

AENY's operations are located in the Coal Fields of Southeastern Kentucky providing easy access to major highways, as well as both CSX and Norfolk Southern Railways.

3. PRODUCTION ESTIMATES

AENY's Surface Mine production is expected to stay steady at 12,000 tons per month. Each of our Deep Mines will produce in excess of 20,000 clean tons per month. Target production estimates for 2012 is 1 million tons. (See reverse for specific project details).

4. EXPERIENCED SENIOR MANAGEMENT

AENY has assembled a Senior Management team with more than 70 years of combined coal mine operations experience.

AENY CAPITAL STRUCTURE

| | |
|----------------------|-------------|
| Current Stock Price: | .10 |
| Shares Issued: | 88,860,000 |
| Fully Diluted: | 107,000,000 |
| 52 Week hi/low: | 1.05 / .06 |
| Market Cap: | \$8,800,000 |



COAL FACTS:

40%

OF TOTAL GLOBAL ELECTRICAL GENERATION

51^B

TONS OF COAL IN EASTERN KENTUCKY

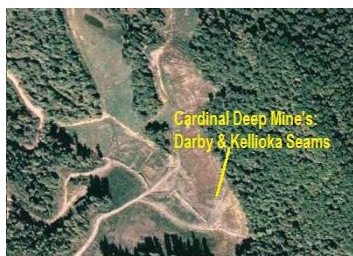
3RD

KENTUCKY IS 3RD IN U.S. COAL PRODUCTION

AMERICAS ENERGY COMPANY SUMMARY

Americas Energy Company purchased Evans Coal Corp. (a 34 year old family operation) in July 2009. Evans Coal Corp had successfully permitted 2 surface mine projects and 2 deep mine projects, with a third permit adding another multi-seam surface mine and 2 deep mines technically approved by the Office of Surface Mining. The Evans projects contained in excess of 6.5 million tons of permitted and bonded reserves.

Upland Church- (Highway 72)



- Permitted for Deep Mining
- 2 Deep Mines, in the Kellioka and Darby
- Both coal seams have Metallurgical properties
- Approximately 2.2m tons of recoverable coal

Artemus



- Permitted for Surface and Deep Mining
- Surface mines in Jellico, Lily and Blue Gem
- Deep mines in the Jellico and Lily seam
- Approximately 2.4m tons of recoverable coal

Highway 92



- Permitted for Surface Mining
- Primarily Auger operation in the Fireclay seam
- Approximately 900k tons of recoverable coal

Safe Harbor statement under the Private Securities Litigation Reform Act of 1995: This press release contains certain "forward-looking statements" as defined in the United States Private Securities Litigation Reform Act of 1995 that involve a number of risks and uncertainties. There can be no assurance that such statements will prove to be accurate and the actual results and future events could differ materially from management's current expectations. Factors that could cause or contribute to such differences include, but are not limited to, contractual difficulties that may arise, the failure to obtain necessary approvals, the future market price of AENY common stock and the ability to obtain the necessary financing. Such factors are detailed from time to time in AENY's filings with the United States Securities and Exchange Commission and other regulatory authorities.

CORPORATE HEADQUARTERS



AMERICAS ENERGY COMPANY

243 N. Peters Rd.
 Knoxville, TN 37923
 O: (865)238-0668
 F: (866)655-6799
 E: info@aenyco.com
 Web: www.AENYCo.com

OPERATIONS:

EVANS COAL CORPORATION
 10853 Hwy 25 E, Flat Lick, KY 40935

SENIOR MANAGEMENT

Ronald A. Scott- Chairman
Christopher L. Headrick- Pres & CEO
John W. Gargis- Exec. Vice President
Jesse Blanco- Chief Counsel
Dr. Hong Duan- CFO
Hershie P. Hayden- VP Mine Operations
John P. Hayes- VP Operations

BOARD OF DIRECTORS

Ronald A. Scott- Chairman
Christopher L. Headrick- Pres & CEO
Dr. James Liu- Director

INVESTOR RELATIONS

BARWICKI INVESTOR RELATIONS
 110 Wall Street, 11 FL,
 New York, NY 10005
Attn: Andrew Barwicki
 O: (516) 662-9461
 E: andrew@barwicki.com